

HP 741

High purity – stainless steel barstock regulator

Model HP 741 is a single stage stainless steel cylinder regulator for applications where a slight rise in delivery pressure from full to empty cylinder can be tolerated.

APPLICATIONS:

- Corrosive gas applications
- High purity gas applications
- Research sample systems gases
- Process analyzer gases
- Gas chromatography
- EPA protocol gases
- Laser gas systems
- Emission monitoring systems

FEATURES:

- Recommended for corrosive gases or purity levels of grade 6.0 (99.9999) and higher
- 316L stainless steel diaphragm eliminates contamination from diffusion or outgassing
- One piece encapsulated seat design includes a sintered filter to protect the seat from particulate contamination
- Chrome plated bonnet, 316L SS body and fittings
- 1×10^{-9} mbar l/s He inboard helium leak rate to maintain gas purity levels
- The 1/8" NPT thread on the bonnet venting for safety
- Maximum inlet pressure 210 bar (3000 psig)

TECHNICAL DATA:

Type	Single stage
Purity	6.0 and higher
Inlet pressure	Max. 210 bar (3000 psig)
Outlet pressure	0-1/3,5/8,5/17/35 bar (15/50/125/250/500 psig)
Flow capacity	Cv = 0,08
Oxygen use	Suitable

MATERIALS:

Body	316L stainless steel barstock
Bonnet	chrome plated brass barstock
Diaphragm	316L stainless steel
Nozzle	316L stainless steel
Seat	PTFE Teflon*
Seals	PTFE Teflon*
Filter	Sintered stainless steel - 10 micron
Seat	Return spring 316L stainless steel
Adjusting Knob	ABS plastic

SPECIFICATIONS:

Inlet / outlet ports	1/4" FNPT
Weight	1,32 kg

* Teflon® is a registered trademark of The Chemours Company



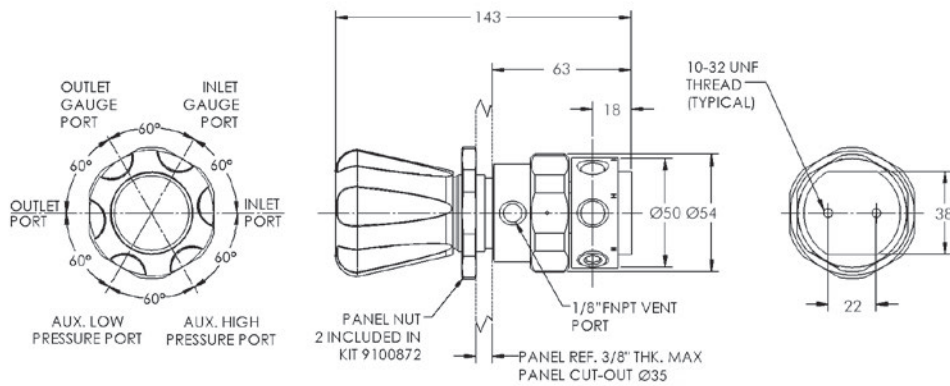
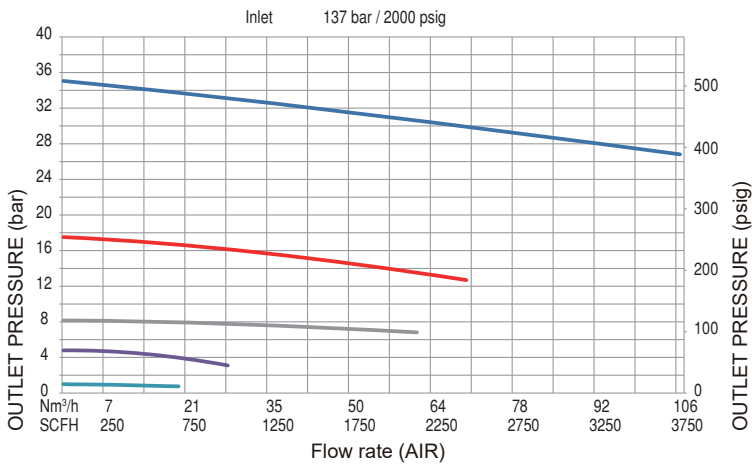
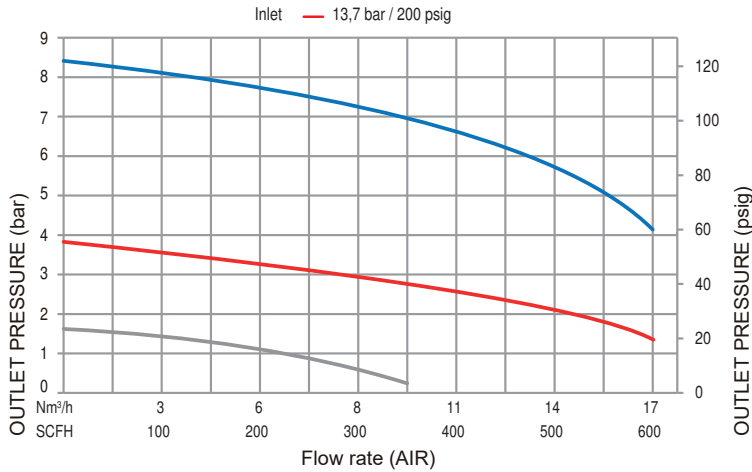
Model shown with additional accessories to be ordered separately

RELATED OPTIONS:

- Front Panel Mount Kit P/N: 9100871
- Wall mounting Bracket P/N: 9101242



FLOW CHART: HPI 741



ORDERING INFORMATION:

MODEL	INLET CONFIGURATION	OUTLET PRESSURE	INLET CONNECTION	OUTLET CONFIGURATION	OPTIONS	GAS TYPE
HP 741	Right	0 - 1 bar 0 - 15 psig	015 1/4" FNPT	000 1/4" FNPT	A He leak cert. (inboard)	2 Please specify
		0 - 3,5 bar 0 - 50 psig	050 DIN 477	1/4" FNPT diaph. valve	B No gauges	3
		0 - 8,5 bar 0 - 125 psig	125 CGA	1/4" MNPT nipple	C With relief valve	4
		0 - 17 bar 0 - 250 psig	250 AFNOR	1/4" tube fitting	D He leak cert. (outboard)	5
		0 - 34 bar 0 - 500 psig	500 BS341	1/8" tube fitting	E 60 bar inlet gauge	6
			UNI NBN NEN 3268	6 mm tube fitting 8 mm tube fitting	F G	

For example:

HP 741 015 DIN 6 BF 2 Ar

HP 742

High purity – stainless steel barstock regulator

Model HP 742 is a two stage stainless steel cylinder regulator for constant delivery pressure from full to near empty cylinder conditions.

APPLICATIONS:

- Corrosive gas applications
- High purity gas applications
- Research sample systems gases
- Process analyzer gases
- Gas chromatography
- EPA protocol gases
- Laser gas systems
- Emission monitoring systems

FEATURES:

- Recommended for corrosive gases or purity levels of grade 6.0 (99.9999) and higher
- 316L stainless steel diaphragm eliminates contamination from diffusion or outgassing
- One piece encapsulated seat design includes a sintered filter to protect the seat from particulate contamination
- Chrome plated bonnet, 316L SS body and fittings
- 1×10^{-9} mbar l/s He inboard helium leak rate to maintain gas purity levels
- The 1/8" NPT thread on the bonnet venting for safety
- Maximum inlet pressure 210 bar (3000 psig)

TECHNICAL DATA:

Type	Two-stage
Purity	6.0 and higher
Inlet pressure	Max. 210 bar (3000 psig)
Outlet pressure	0-1/3,5/8,5/17/35 bar (15/50/125/250/500 psig)
Flow capacity	Cv = 0,06
Oxygen use	Suitable

MATERIALS:

Body	316L stainless steel barstock
Bonnet	Chrome plated brass barstock
Diaphragm	316L stainless steel
Nozzle	316L stainless steel
Seat	PTFE Teflon*
Seals	PTFE Teflon*
Filter	Sintered stainless steel - 10 micron
Seat	Return spring 316L stainless steel
Adjusting Knob	ABS plastic

SPECIFICATIONS:

Inlet / outlet ports	1/4" FNPT
Weight	2,01 kg

* Teflon® is a registered trademark of The Chemours Company



Model shown with additional accessories to be ordered separately

HP 743

High purity – stainless steel barstock regulator

Model HP 743 is a stainless steel pipeline regulator for pipeline and other applications up to 210 bar (3000 psig) inlet pressure.

APPLICATIONS:

- Corrosive gas applications
- High purity gas applications
- Research sample systems gases
- Process analyzer gases
- Gas chromatography
- EPA protocol gases
- Laser gas systems
- Emission monitoring systems

FEATURES:

- Recommended for corrosive gases or purity levels of grade 6.0 (99.9999) and higher
- 316L stainless steel diaphragm eliminates contamination from diffusion or outgassing
- One piece encapsulated seat design includes a sintered filter to protect the seat from particulate contamination
- Chrome plated bonnet, 316L SS body and fittings
- 1×10^{-9} mbar l/s He inboard helium leak rate to maintain gas purity levels
- The 1/8" NPT thread on the bonnet venting for safety
- Maximum inlet pressure 210 bar (3000 psig)

TECHNICAL DATA:

Type	Single stage
Purity	6.0 and higher
Inlet pressure	Max. 210 bar (3000 psig)
Outlet pressure	0-1/3,5/8,5/17/35 bar (15/50/125/250/500 psig)
Flow capacity	Cv = 0,08
Oxygen use	Suitable

MATERIALS:

Body	316L stainless steel barstock
Bonnet	Chrome plated brass barstock
Diaphragm	316L stainless steel
Nozzle	316L stainless steel
Seat	PTFE Teflon*
Seals	PTFE Teflon*
Filter	Sintered stainless steel - 10 micron
Seat	Return spring 316L stainless steel
Adjusting Knob	ABS plastic

SPECIFICATIONS:

Inlet / outlet ports	1/4" FNPT
Weight	1,22 kg

* Teflon® is a registered trademark of The Chemours Company



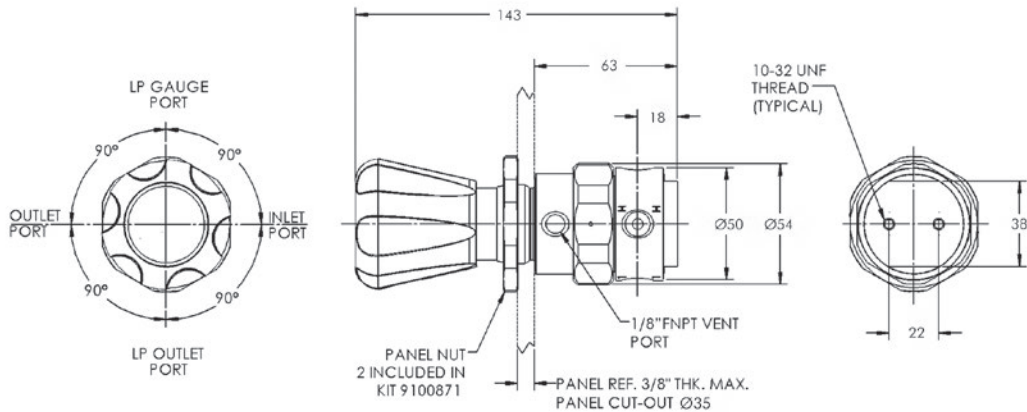
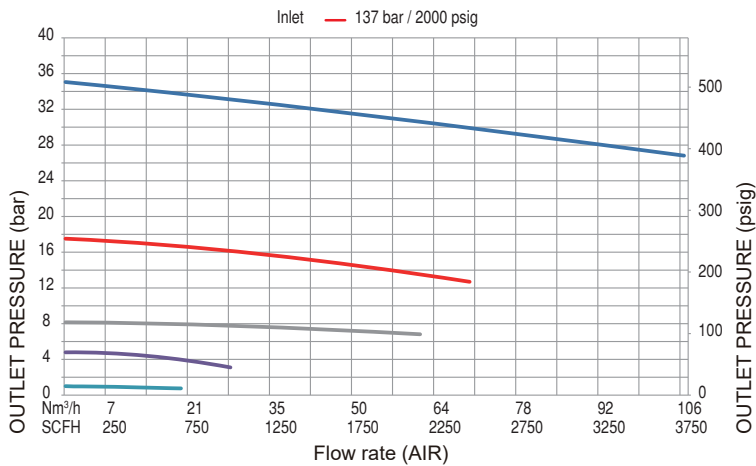
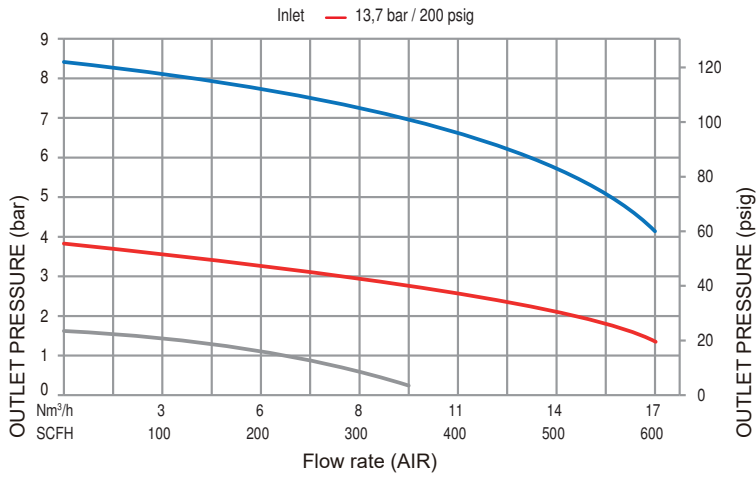
Model shown with additional accessories to be ordered separately

RELATED OPTIONS:

Front Panel Mount Kit P/N: 9100871
Wall mounting Bracket P/N: 9101242



FLOW CHART: HPI 743



ORDERING INFORMATION:

MODEL	OUTLET PRESSURE	INLET CONNECTION	OUTLET CONFIGURATION	OPTIONS	GAS TYPE
HP 743	0 - 1 bar	1/4" FNPT	1/4" FNPT	Without relief valve	Please specify
	0 - 15 psig	1/4" MNPT	1/4" FNPT diaph. valve	He leak cert. (inboard)	
	0 - 3,5 bar	1/4" tube fitting	1/4" MNPT nipple	No gauges	
	0 - 50 psig	6 mm tube fitting	1/4" tube fitting	With relief valve	
	0 - 8,5 bar	8 mm tube fitting	1/8" tube fitting	He leak cert. (outboard)	
	0 - 125 psig		6 mm tube fitting	60 bar inlet gauge	
	0 - 17 bar		8 mm tube fitting		
	0 - 250 psig				
	0 - 34 bar				
	0 - 500 psig				

For example:
 HP 743 050 003 E 1 Ar

SG 905 SS

High purity – single regulator mounting station

The SG 905 SS semi-automatic high purity switchover prevents downtime by automatically switching gas supply from the primary cylinder bank to the reserve cylinder bank. The user resets the primary bank by turning the knob. Manual adjustment of the individual regulators is not required.

All systems include a line control regulator.

APPLICATIONS:

- Semi-automatic switchover

FEATURES:

- Wall mounting panel and brackets included
- Maximum inlet pressure 210 bar 3000 psig
- Delivery pressure: 0-125 psig; except acetylene 0-15 psig
- Inlet / outlet - 1/4" NPT
- Headers include diaphragm-type shut-off valves
- All systems include stainless steel pigtailed with check valves and stainless steel inner core
- Acetylene includes dry-type flash arrestors on pigtail end
- All pigtailed have protective armour casing for added safety



Model shown with additional accessories to be ordered separately

SPECIFICATIONS:

MODEL	MAXIMUM INLET PRESSURE	MAXIMUM FLOW RATE	DELIVERY RANGE	
905 (Oxy/Inert)	210 bar 3000 psig	8,5 Nm ³ /h 300 SCFH	0 - 8,5 bar 0 - 125 psig	125
905 (LPG)	27,5 bar 400 psig	5,66 Nm ³ /h 200 SCFH	0 - 3,5 bar 0 - 50 psig	050
905 (Acetylene)	27,5 bar 400 psig	2,8 Nm ³ /h 100 SCFH	0 - 1 bar 0 - 15 psig	015